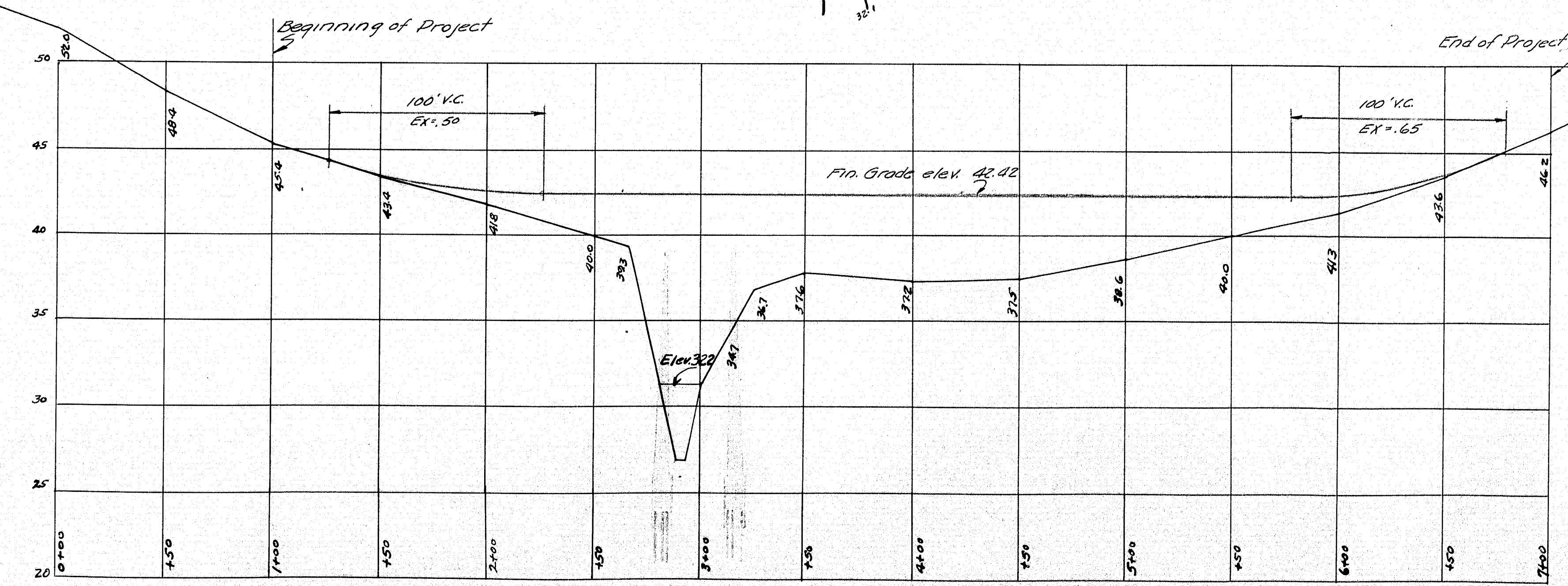
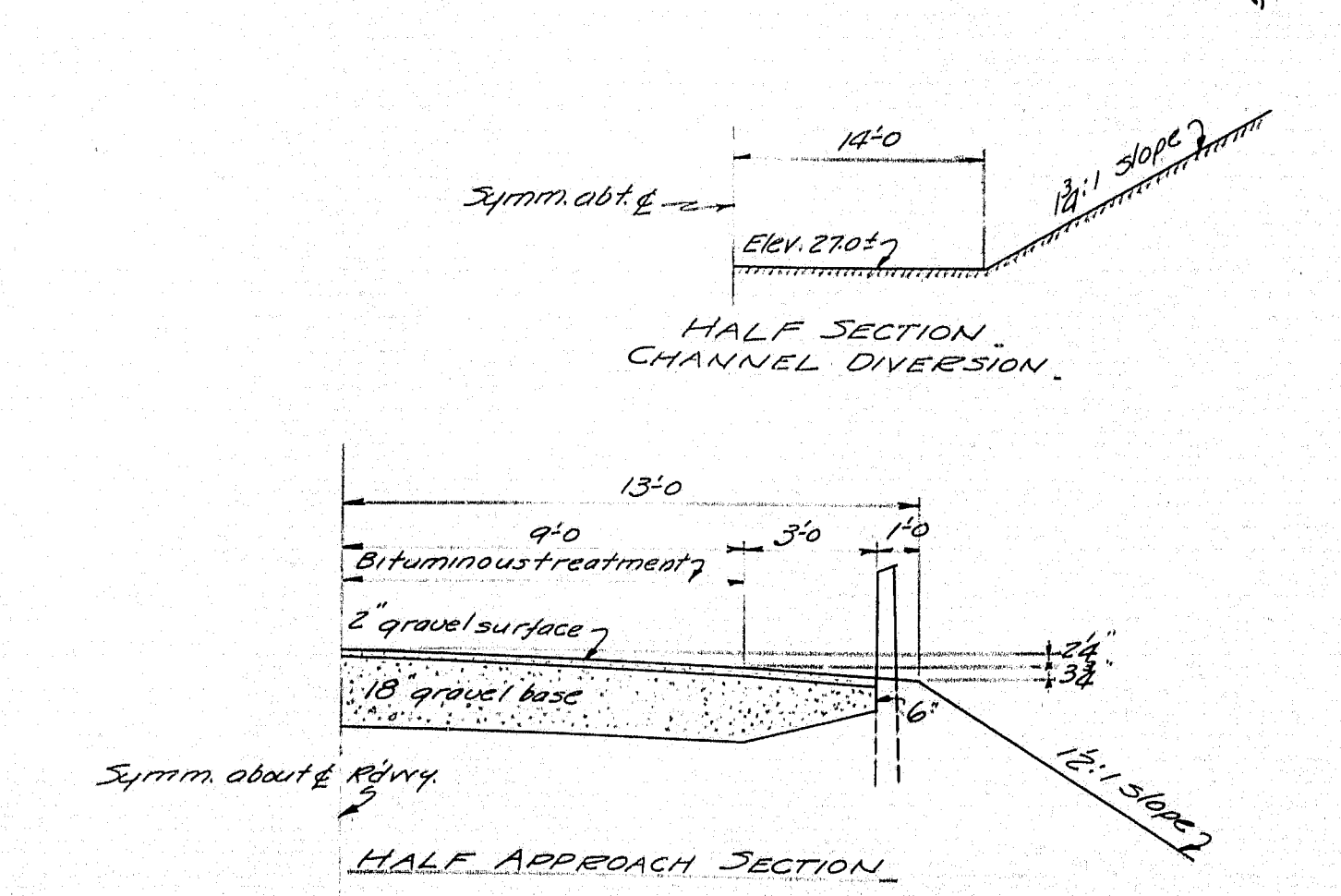
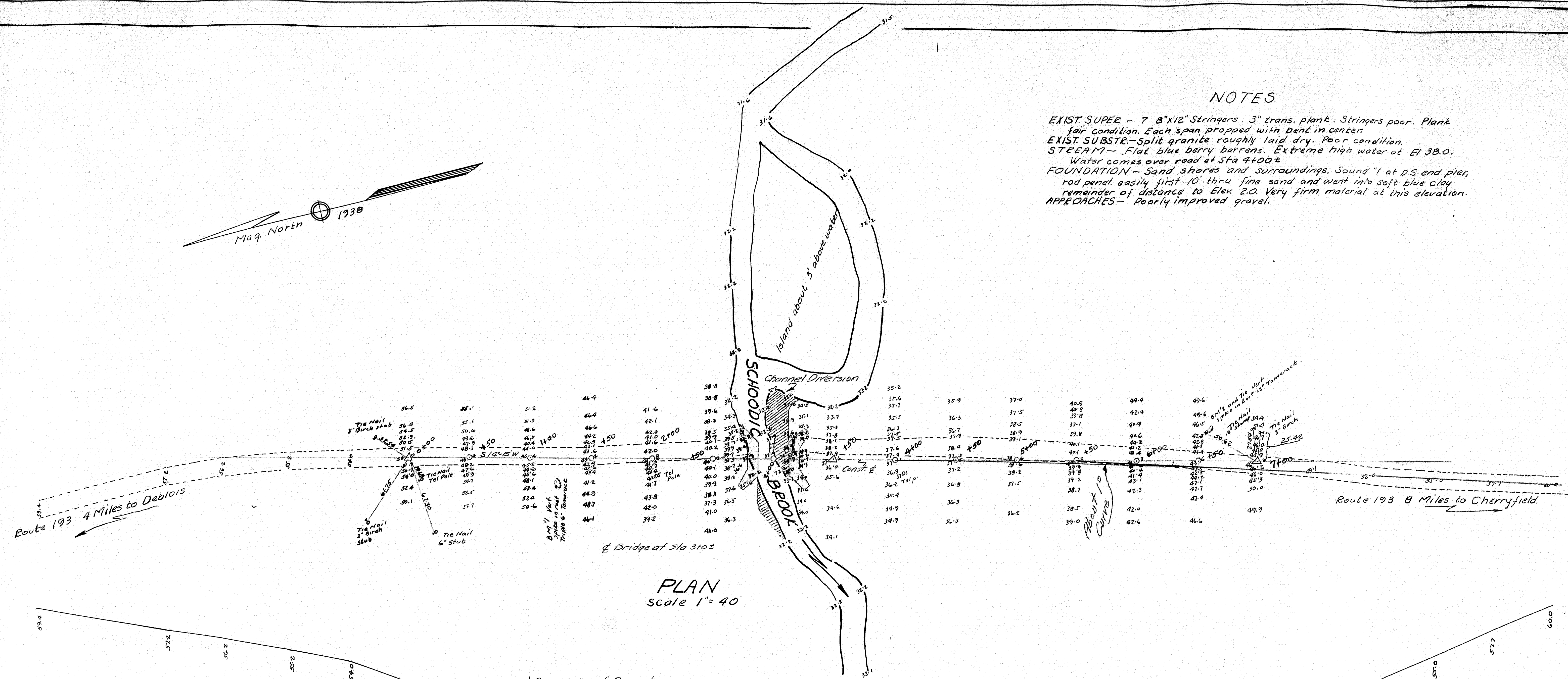
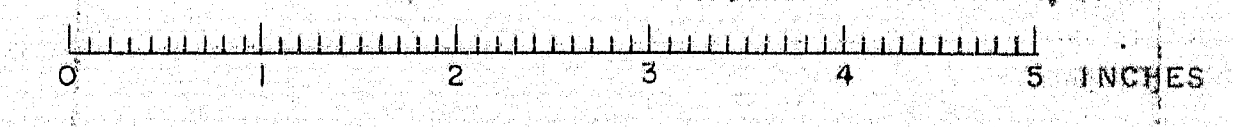


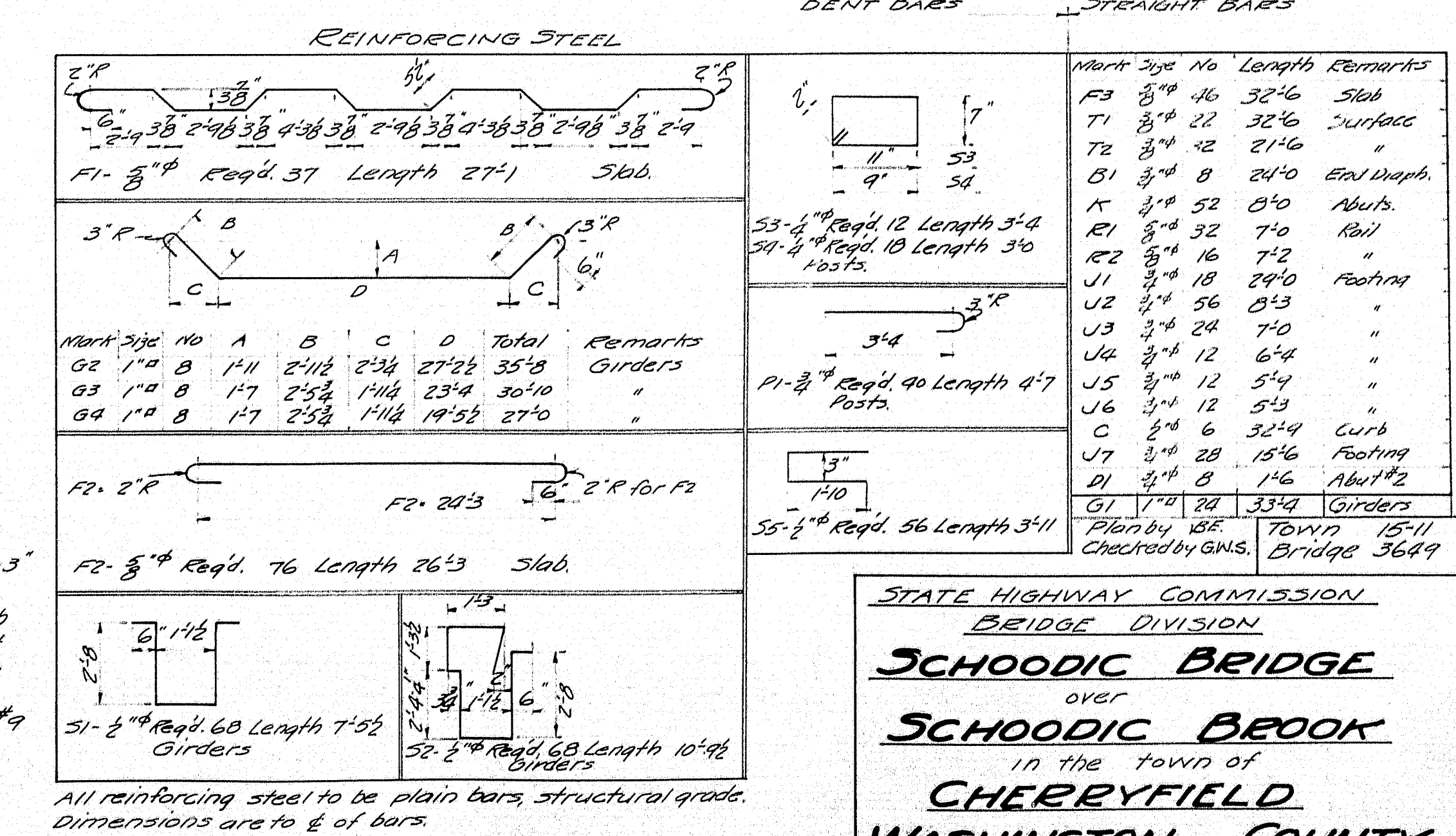
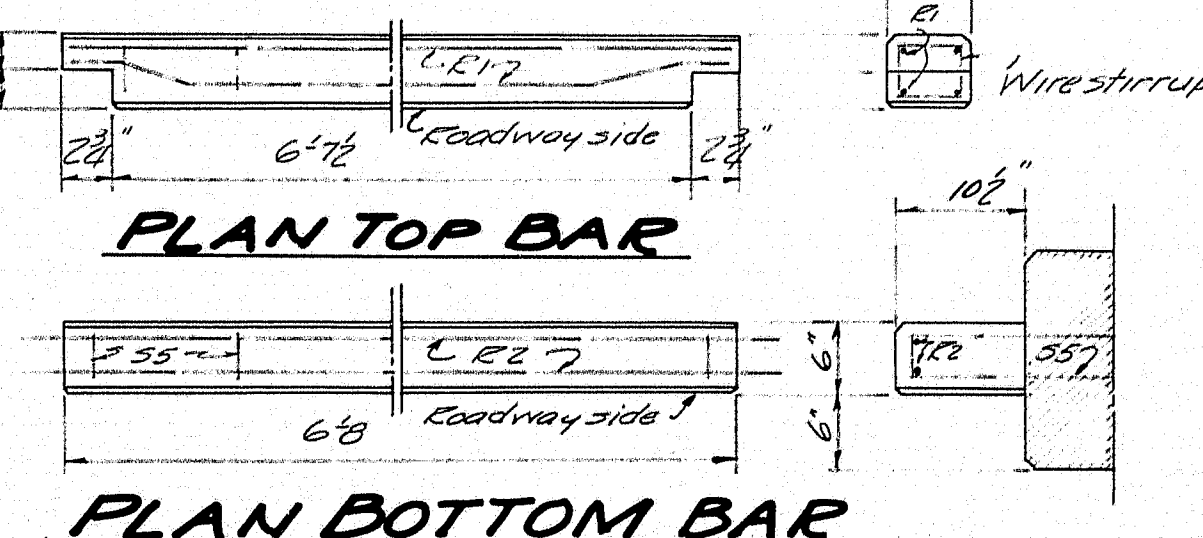
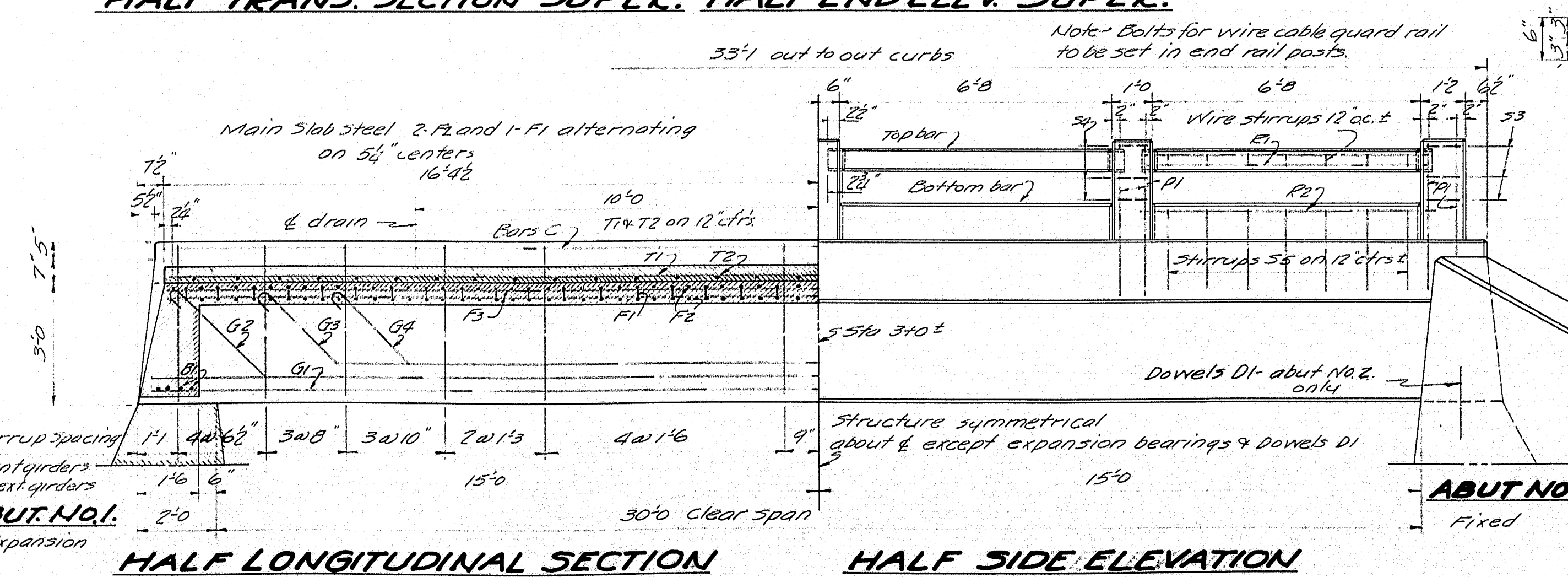
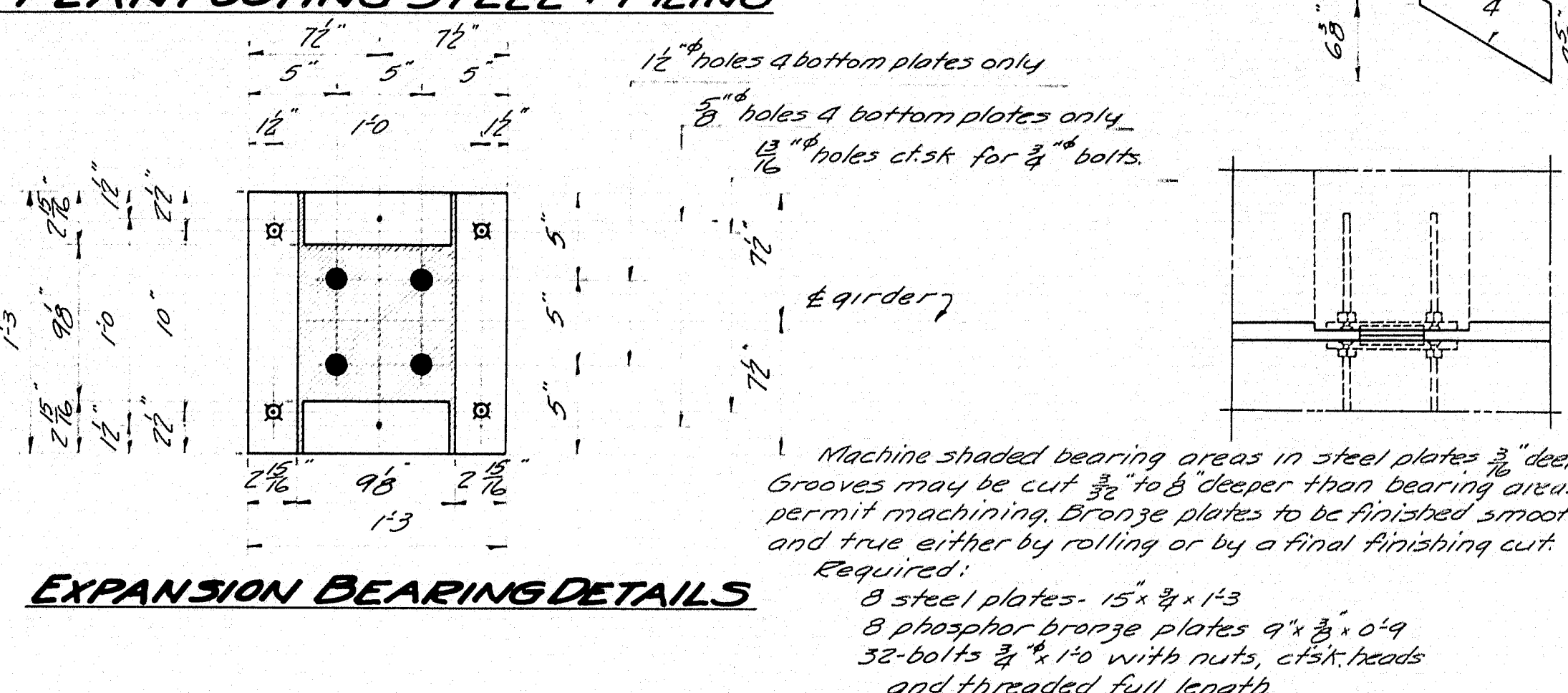
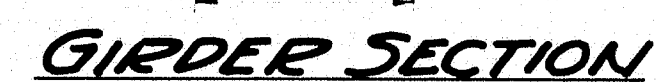
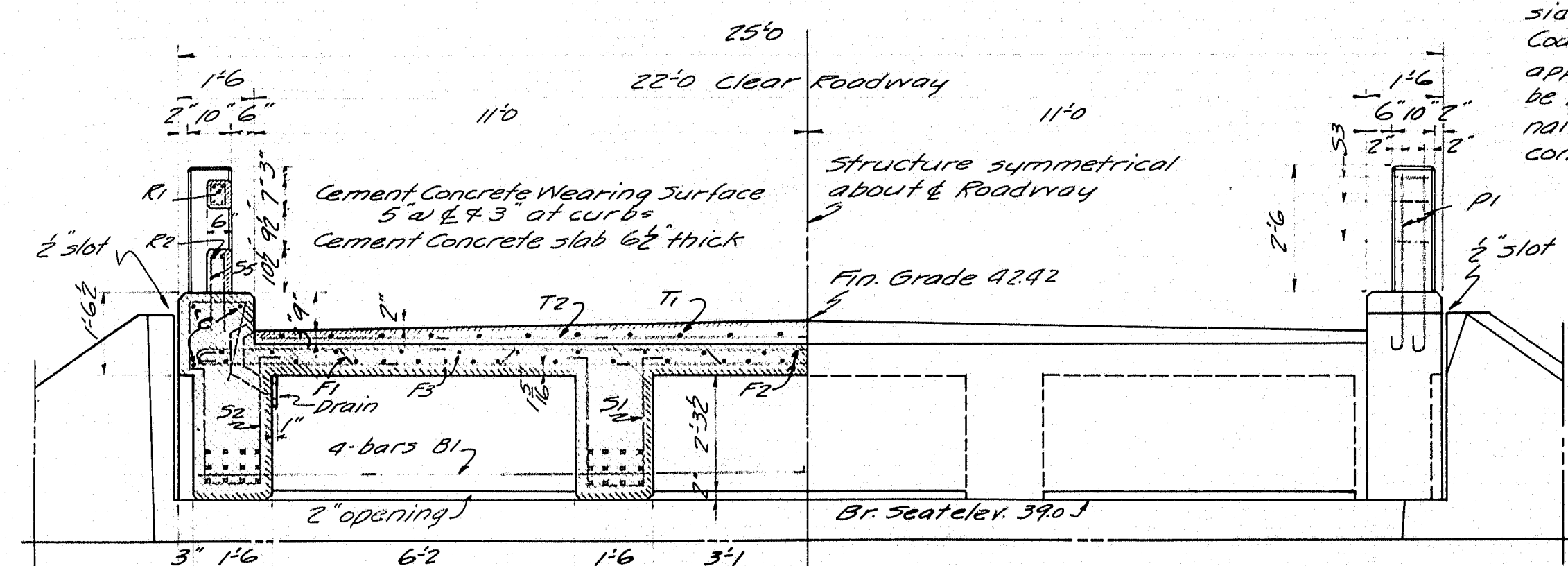
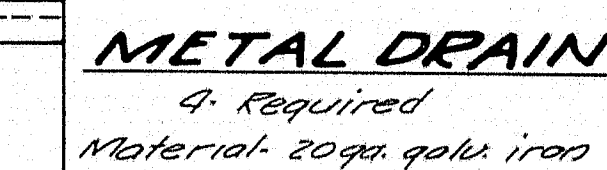
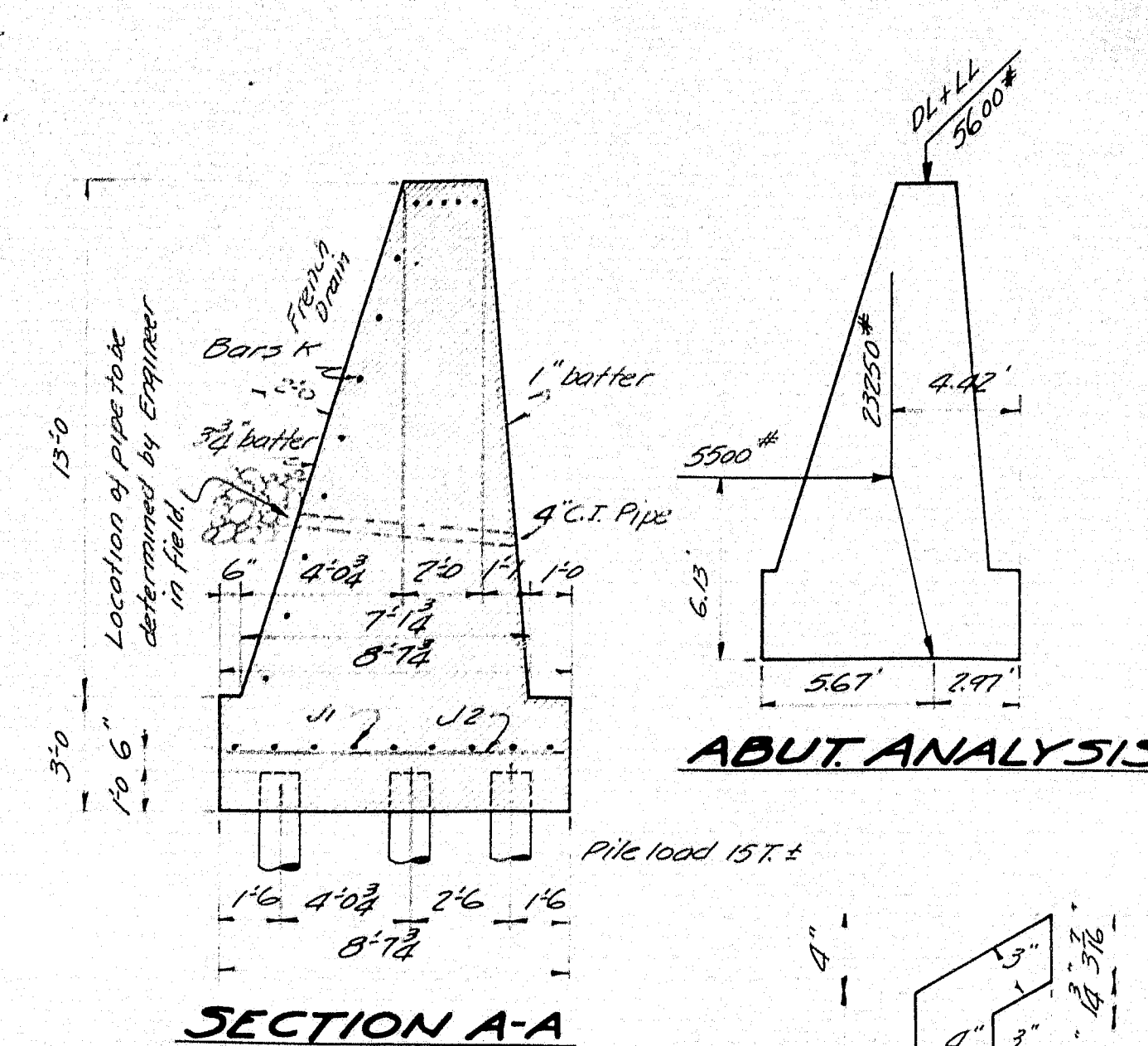
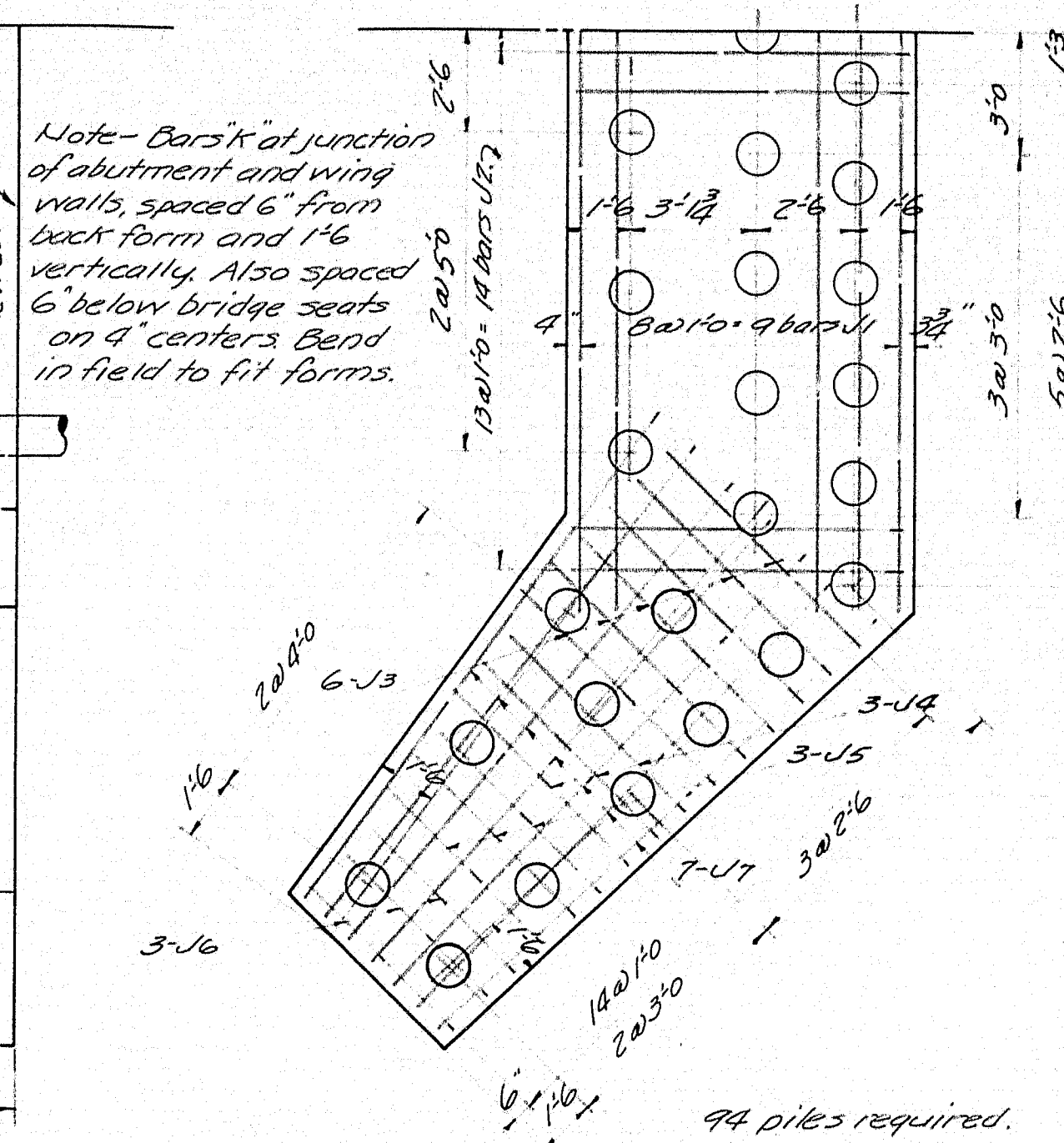
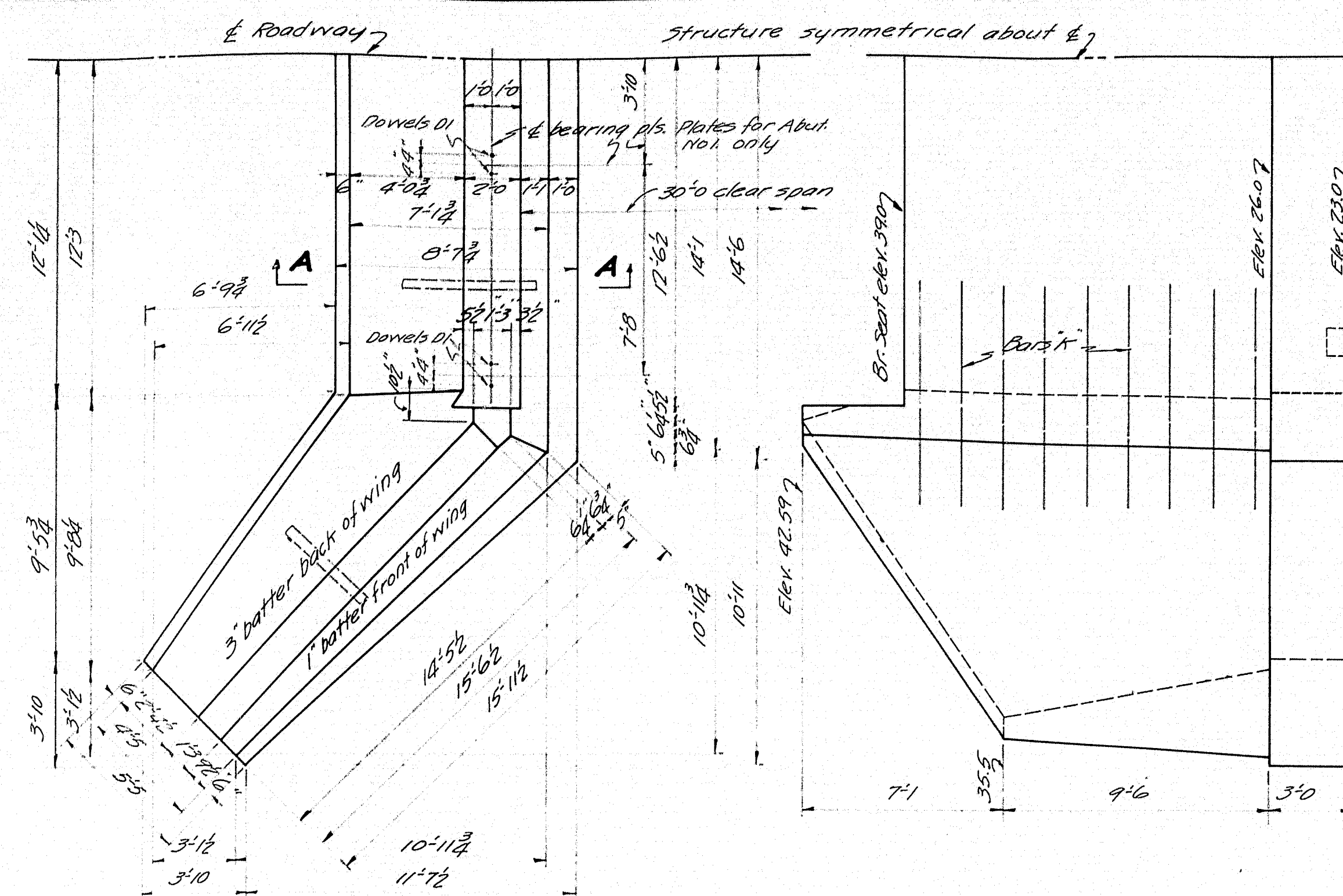
NOTES

EXIST. SUPER - 7 8"x12" Stringers, 3" trans. plank. Stringers poor. Plank fair condition. Each span propped with bent in center.
 EXIST. SUBSTE. - Split granite roughly laid dry. Poor condition.
 STEAM - Flat blue berry berrans. Extreme high water at El 38.0.
 Water comes over road at Sta 4+00±
 FOUNDATION - Sand shores and surroundings. Sound "I" at D.S. end pier, rod penetr. easily first 10' thru fine sand and went into soft blue clay remainder of distance to Elev. 2.0. Very firm material at this elevation.
 APPROACHES - Poorly improved gravel.



SURVEY	BLAKE	TOWN 15-11
PLAN	BLAKE	BRIDGE 3649
STATE HIGHWAY COMMISSION		
BRIDGE DIVISION		
SCHOODIC BRIDGE		
OVER		
SCHOODIC BROOK		
IN THE TOWN OF		
CHERRYFIELD		
WASHINGTON COUNTY		
SURVEY PLAN		
SHEET 1 OF 3 AUGUSTA, ME JAN. 1939		

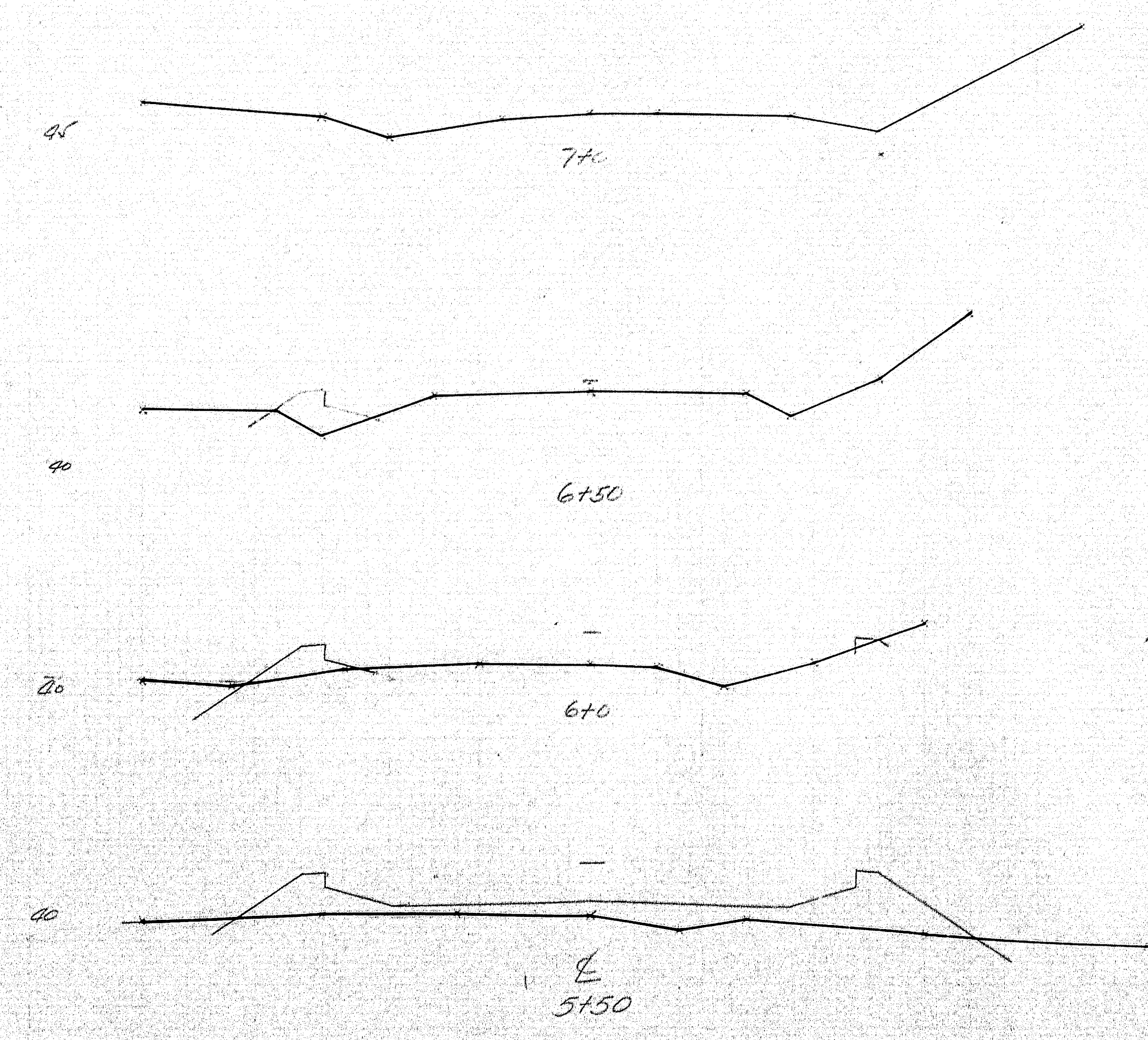
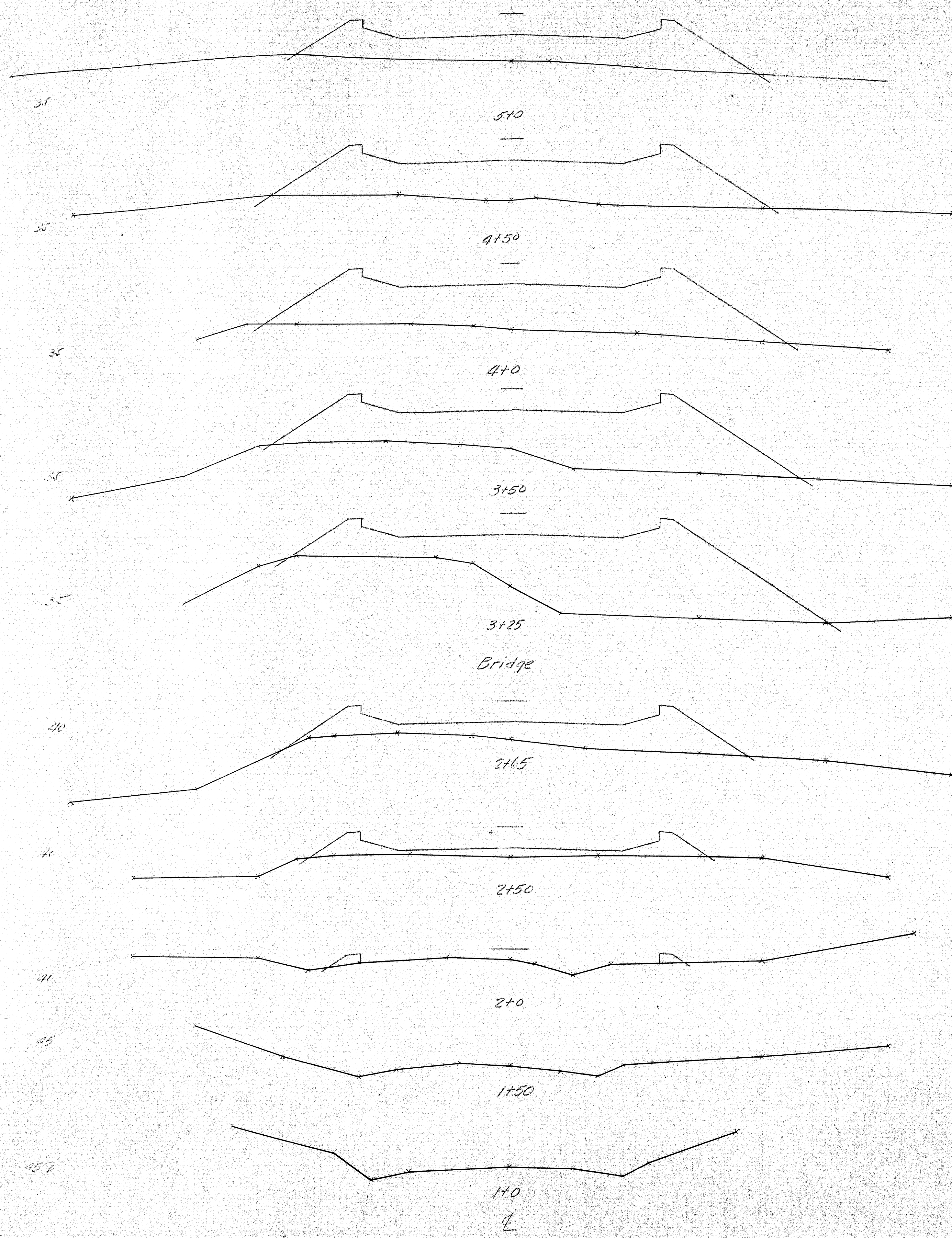




Mark	Age	No	Length	Remarks
F3	2 ^{1/2} y	40	32 1/2	Slab
T1	2 ^{1/2} y	42	32 1/2	Surface
B2	3 ^{1/2} y	42	21 1/2	"
C1	3 ^{1/2} y	8	24 1/2	End Slab
K	2 ^{1/2} y	52	30	Nails
R1	3 ^{1/2} y	52	7 1/2	Rail
R2	2 ^{1/2} y	16	7 1/2	"
J1	3 ^{1/2} y	18	24 1/2	Footings
J2	3 ^{1/2} y	56	3 1/2	"
J3	3 ^{1/2} y	24	7 1/2	"
J4	2 ^{1/2} y	12	6 1/2	"
J5	3 ^{1/2} y	12	5 1/2	"
J6	3 ^{1/2} y	12	5 1/2	"
C	3 ^{1/2} y	6	3 1/2	Curb
U7	3 ^{1/2} y	28	15 1/2	Long
D1	3 ^{1/2} y	28	14	Nail #2
T1	2 ^{1/2} y	20	3 1/2	Grades
Plenty left			Town	15 1/2
Checked by GMS.			Bridge	36 1/2

ROADWAY COMMISSION
BRIDGE DIVISION
ODIC BRIDGE
over
ODIC BROOK
in the town of
BERRYFIELD

STATE HIGHWAY COMMISSION
BRIDGE DIVISION
SCHOODIC BRIDGE
over
SCHOODIC BROOK
in the town of
CHERRYFIELD
WASHINGTON COUNTY
BRIDGE - DETAILS
Sheet 2 of 3 Augusta, Me. Feb. 1939



SCHOODIC BRIDGE
CHERRYFIELD
 CROSS SECTIONS
 Sheet 3 of 3 Augusta Me. Feb. 1939
 Plotted by E.
 Checked by -GWS

